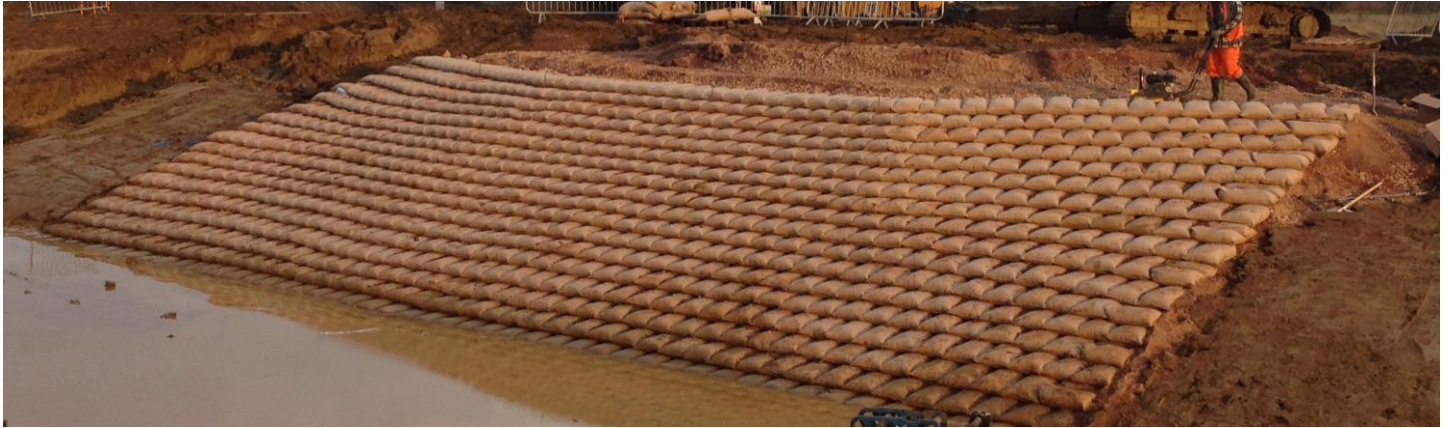


## Case Study: Watercourse Stabilisation Stanton Cross Wellingborough Product: Envirolok Vegetated Wall System



Stanton Cross is a major residential-led development in Wellingborough. New homes are coupled with improved infrastructure, community facilities and green open space. Envirolok was selected to provide a vegetated Mechanically Stabilised Earth embankment to protect a new stretch of watercourse.

The Envirolok bags were filled with site won spoil and seeded top soil. The system was selected for its ability to absorb rainfall and surface water runoff. The system will also prove beneficial in decreasing stormwater volume through infiltration. Envirolok combines the protection of a turf reinforcement mat and the encapsulation of high quality soils to grow more robust vegetation in hydraulic conveyance systems. Once in place the Envirolok bags form a permanent erosion control system, which will be further stabilised by root growth as the seeding germinates creating a green embankment enhancing the environment in a situation where previously hard armoured options were the rule.



### Contactor



### Client

