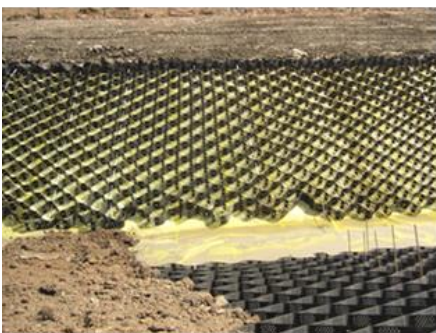


Case Study: Channel Protection Access 18 Avonmouth Products: Geoweb® & GeoJute



Access 18 comprises of a strategically located development site in the established distribution and industrial location of Avonmouth on the edge of Bristol. The project consisted of a drainage channel or rhine and associated collection pond. The client was initially concerned with potentially contaminated soils, with this in mind the channel was lined with an impermeable, self-sealing Geosynthetic Clay Liner. This would stop any possible contamination of the water course.

200mm deep Geoweb GW40V8 was selected to protect the liner due to the patented tendon load transfer system which was ideally suited to provide safe, secure fixing without the use of permanent pins. The Tendon was securely anchored at the crest of the embankment by ATRA® Anchors as specified in the Presto Geosystems installation guide. Tendon was threaded through the I-SLOT® in the Geoweb panels as they were expanded down the slope, and secured again at the toe. Site won material was used to infill the Geoweb. Once the Geoweb was installed a layer of GeoJute was used to protect the seeding while the grass established. The installation has now been functional for some seven years and maintains a pleasant appearance and a sustainable green area in an otherwise commercial landscape.



Contractor



Consulting Engineer



Client

