

Material: Greenfix PP5 Extreme, Greenfix Anchor System,  
Greenfix Coir blanket

Date: October 2014

## Cobnor Point Flood Plain Habitat, Chichester Sussex



During 2012 Natural England identified the requirement for a managed realignment of the coastline between Chichester Harbour and Selsey Bill. Part of this scheme was the creation of a wetland habitat at Cobnor Point near Chichester. As part of the North Solent Shoreline Management Plan the key policy drivers for the realignment of the existing privately owned and maintained defences were the lack of infrastructure or properties within the area at risk from tidal flooding, which provided an opportunity to improve flood storage capacity and the potential to provide inter-tidal habitat creation opportunities. This frontage is within Chichester Harbour Area of Outstanding Natural Beauty.



The contractor, Land & Water selected the Greenfix PP5 Extreme permanent turf reinforcement and Greenfix Anchor System for part of this project. This system provides a provides a green alternative to Rock Rip Rap.



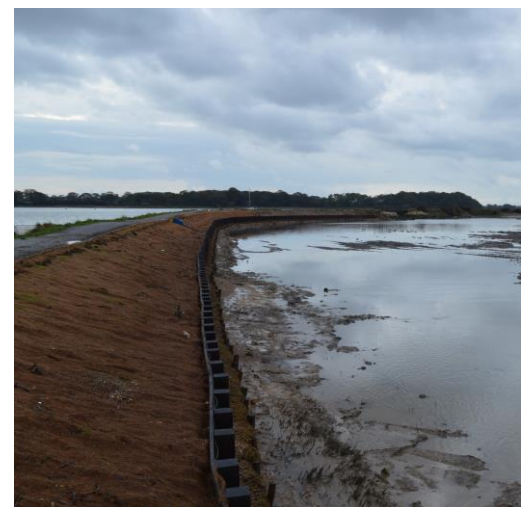
The specification presented above is to the best of our knowledge, true and accurate. Greenfix Soil Stabilisation and Erosion Control Limited (GSSEC) reserve the right to change any specification without prior notice. GSSEC cannot guarantee or offer warranty on products, unless agreed to in writing for specific conditions or for performance as the manner of handling, use and installation are beyond our control. We will not be liable for damages or losses, direct or indirect, of our GSSEC Range of Products due to the above reasons. All comparative data was correct at time of print. E&OE.

PP5 Extreme was installed over a nonwoven geotextile onto the new Northern Berm. The PP5- Extreme was extended across both sides of the embankment. At the toe of the slope it was buried in a clay filled anchor trench.

Working in conjunction with the PP5-Extreme turf reinforcement mats, the Greenfix Anchor System is designed to provide immediate stabilisation, requires no crimping and is accompanied by a range of installation tools. Supplied in combinations of anchors, terminations and wire lengths, kits are pre-assembled and specific to the project requirements and geotechnical conditions, ensuring considerable time and labour savings



In other areas of the site coir blanket was used as an erosion control blanket due to its combination of robust construction and easy installation at an economical price. The coir fibres retain moisture promoting germination, and protecting the seeding. Greenfix J Pins were used to secure the coir blanket. The natural fibre blanket will biodegrade over 36 months leaving the vegetation root system to naturally prevent soil erosion.



The specification presented above is to the best of our knowledge, true and accurate. Greenfix Soil Stabilisation and Erosion Control Limited (GSSEC) reserve the right to change any specification without prior notice. GSSEC cannot guarantee or offer warranty on products, unless agreed to in writing for specific conditions or for performance as the manner of handling, use and installation are beyond our control. We will not be liable for damages or losses, direct or indirect, of our GSSEC Range of Products due to the above reasons. All comparative data was correct at time of print. E&OE.